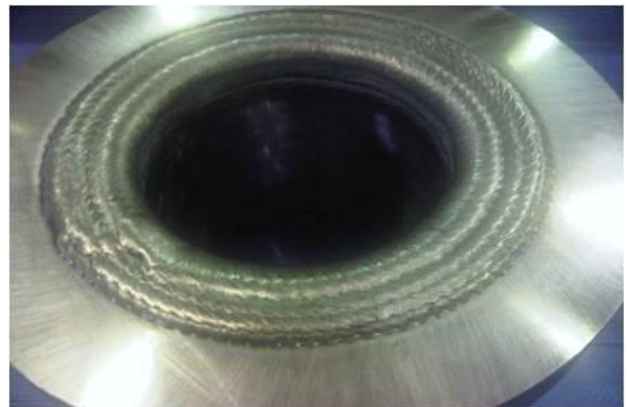


# Surface Treatment



Surface Treatment by Cladding and Lining

## Surface Treatment

### ✓ Description

In this category CPP provides two major services:

- 1- Cladding by Welding methods
- 2- Lining by Glass layer

➤ Welding clad is also called as Overlay cladding which is a way to reinforce the surface against erosion, corrosion or abrasion. In this method we put a controlled and calculated thickness of second metal on the base metal by welding.

Although there are other ways for overlay such as metal spray or chemical solutions, the welding procedure is the most efficient and the most reliable method even for Hard facing or Cladding.

In this method we can overlay the base metal with following materials (but not only):

- Stellite
- Inconel
- SS 316
- Other ...

Our trained and qualified welders cause the high quality of cladding.

We can also provide all NDTs for our products as like as Penetration Dye Test, Ultra Sonic test and so on.

- Sometimes the highest roughness and or lowest intension for surface contact is required; then the solution is Glass lining. This is usually mandatory in reactors or precision separators. For avoiding chemical reaction or erosion, we may offer the PTFE coating or Teflon Lining, too.

Therefore, we can classify our Lining services to:

- Glass Lining
- PTFE Lining

